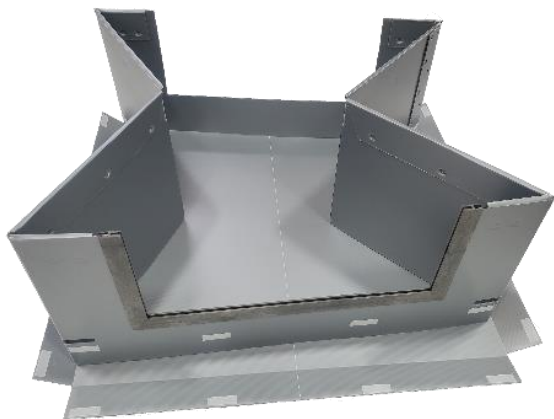


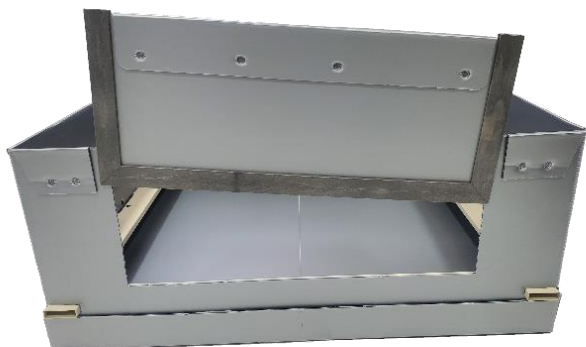
# Dura-Whelp® Weaning Pen Instructions



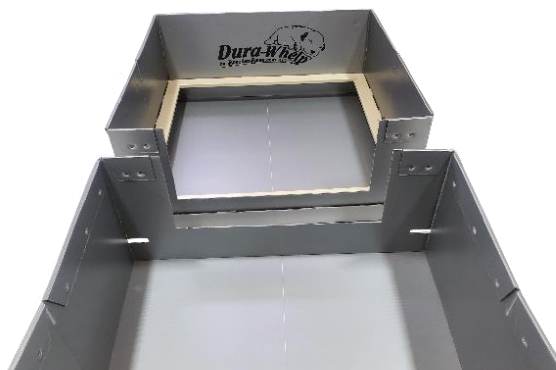
1. Unfold the floor with the Velcro tabs facing up. Square up the Weaning Pen walls on the floor.



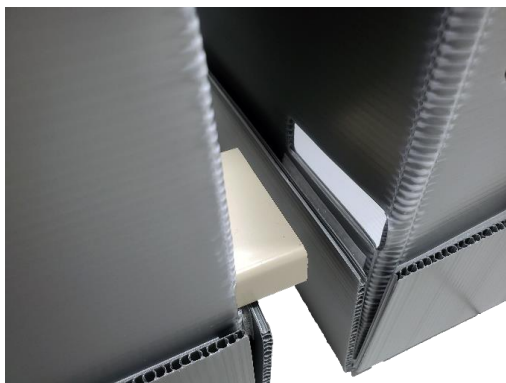
2. Fold up floor flaps, allowing the Velcro on the floors to adhere to the Velcro on the walls. Then remove the door frame from the Weaning Pen by sliding it straight up.



3. Remove the door and frame from the **Whelping Box** by sliding the door frame straight up.



4. Push the Weaning Pen side with the rail cutout holes against the opening of the Whelping Box.



5. Line up the rails protruding from the Whelping Box with the cutouts on the Weaning Pen.



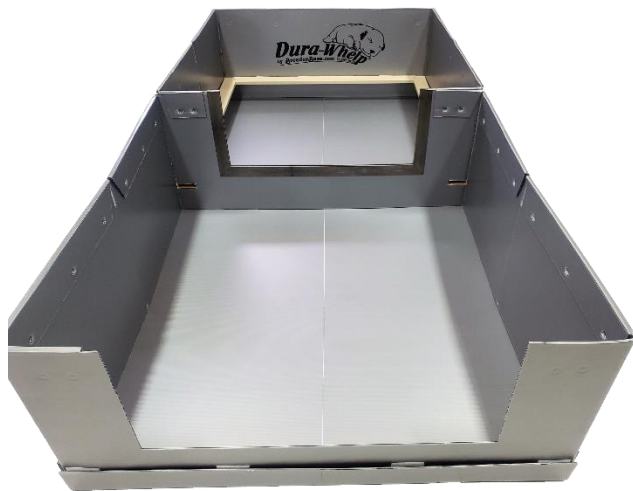
6. Push the Weaning Pen and Whelping Box together. The rails should extend into the Weaning Pen.



7. Determine which door frame is for the Weaning Pen. The Weaning Pen door frame has a wider opening than the Whelping Box Door Frame



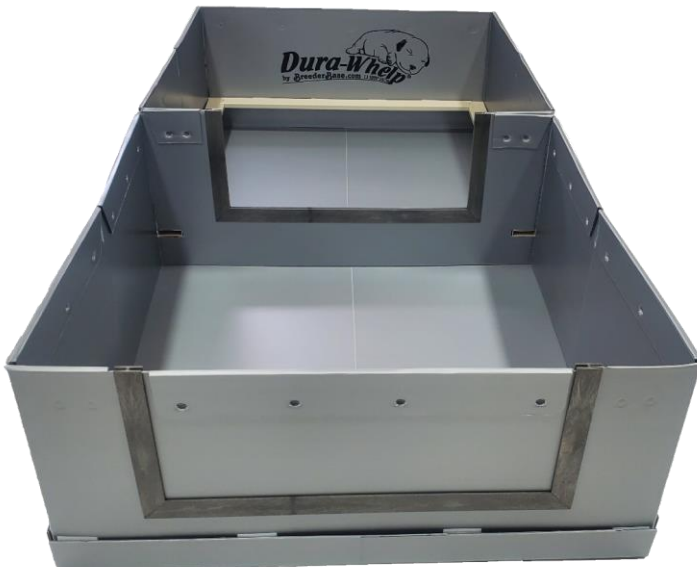
8. Carefully position your Weaning Pen door frame over the door openings of both the Weaning Pen and Whelping Box and slide the door frame down. Take extra care to get both bottom parts of door openings into the wider slot. DO NOT FORCE.



9. Your Weaning Pen should now be connected to your Whelping Box.



10. Next, slide your Whelping Box door frame down over the outer opening of the Weaning Pen.



11. Insert your door into the door frame that you wish to be closed. Your Whelping Box and Weaning Pen are now assembled. Disassemble in reverse order.

Durawhelp.com

[info@durawhelp.com](mailto:info@durawhelp.com)

(208) 747-3605

